

TACKLING RECREATIONAL DRUG USE IN LUXEMBOURG

Katia Duscherer

CePT . Centre de Prévention des Toxicomanies

Luxembourg

Luxembourg

A country of 2.586 km²

“ maximal length 82 km

“ maximal width 57 km



562.958 residents

“ 46% of which without a Luxembourgish passport, over 170 nationalities

“ 107.000 people in Luxembourg-City, 70% of foreigners

“ border countries: Germany, France and Belgium

Problematic Drug Use

« Causing damage to physical or mental health » (WHO)

In Luxembourg

- “ Mainly associated with the injection of heroin and/or poly-drug use (Origer, 2014).
- “ 5.4 out of 1,000 habitants aged between 15 and 64 years (Origer, 2015) . around 2500 persons are concerned.
- “ The numbers are in decline since 2004.

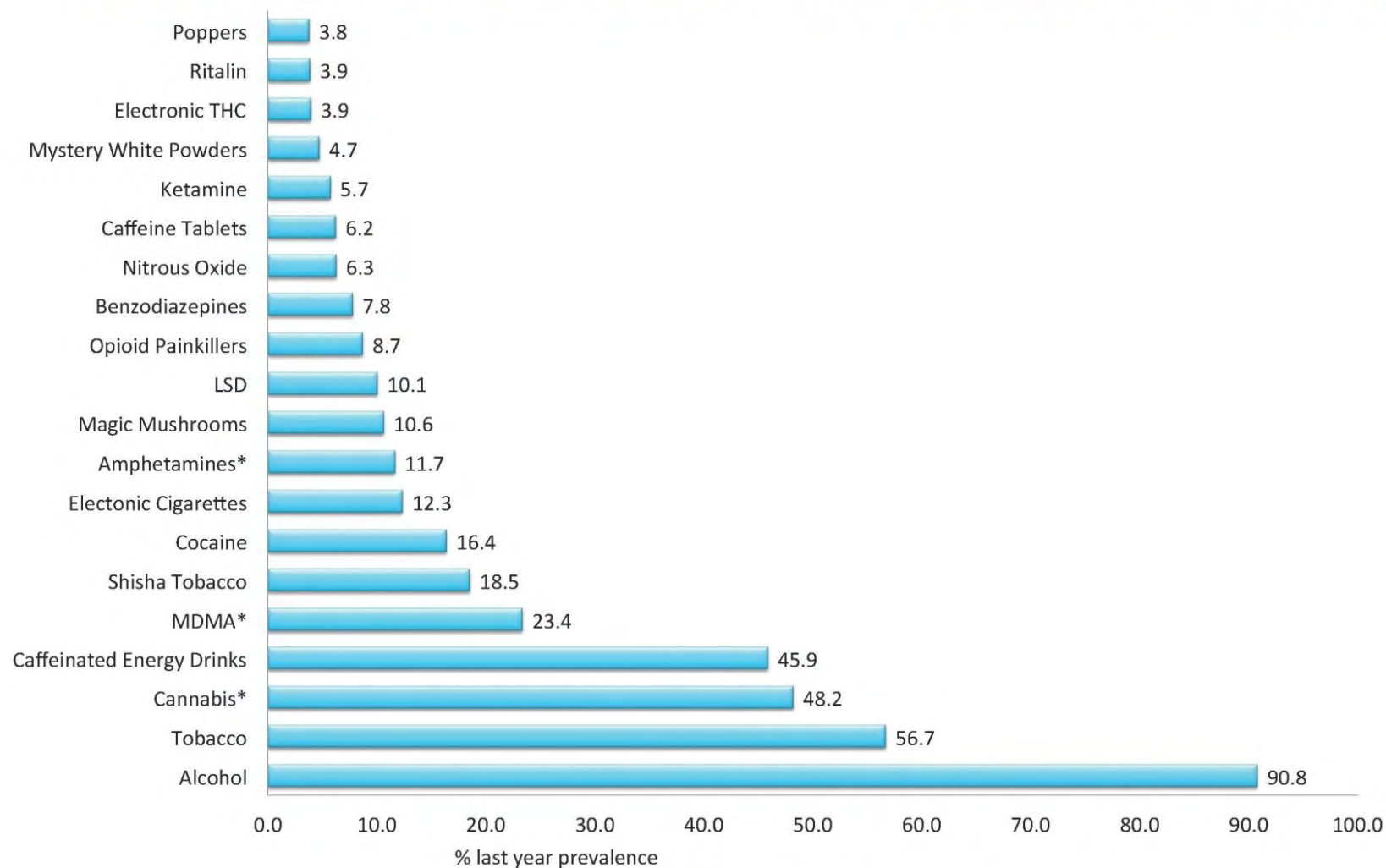
Problematic Drug Use

- “ Detoxification services
 - “ Residential therapies
 - “ Counselling, including an offer for cannabis users
 - “ Aftercare
-
- “ Substitution treatment
 - “ Injection room
 - “ Low threshold services
 - “ Supervised housing
 - “ Reintegration measures

Universal addiction prevention

- “ Reduce and delay drug use; prevent addiction
 - “ Information about drugs (including alcohol, tobacco) and their adverse health effects
 - “ Promotion of life skills and general wellbeing
 - “ Often aimed at children, teenagers or parents
-
- “ School projects
 - “ Didactic tools, interactive exhibitions
 - “ Outdoor activities, theatre, role playing
 - “ Media campaigns and contests

Top 20 Drugs – Last 12 Months – Whole Sample (N=78,819)



*Denotes all types and preparations

Global Drug Survey GDS2014©

Not to be reproduced without authors permission

Recreational drug use

- “ While a lot of people consume drugs, only few of them are problematic drug users.
- “ In the absence of any severe addiction or other acute health issues linked to their drug consumption, no incentive to consult specialized health services.
- “ Not interested, nor targeted by universal prevention campaigns.
- “ Missing data about recreational drug use in Luxembourg.
- “ Need to develop specific campaigns.

Credibility

- “ Specific campaigns and information materials for drug users, which neither exaggerate nor trivialize the associated health risks



Party MAG-Net

Outreach project in the party scene since 2009

- “ peer approach
- “ recreational drug use

Harm reduction through

- “ Information about drugs
- “ Earplugs & condoms
- “ Sunscreen & soap
- “ Personal contact



Surveys about drug consumption habits of the partygoers

Party MAG-Net



Party MAG-Net survey

Anonymous multiple choice questionnaire

Questions about

- “ gender and age
- “ understood languages
- “ residency
- “ transport
- “ recent use of psychoactive substances



Survey 2014

16 events in the Grand Duchy of Luxembourg

3679 validated questionnaires

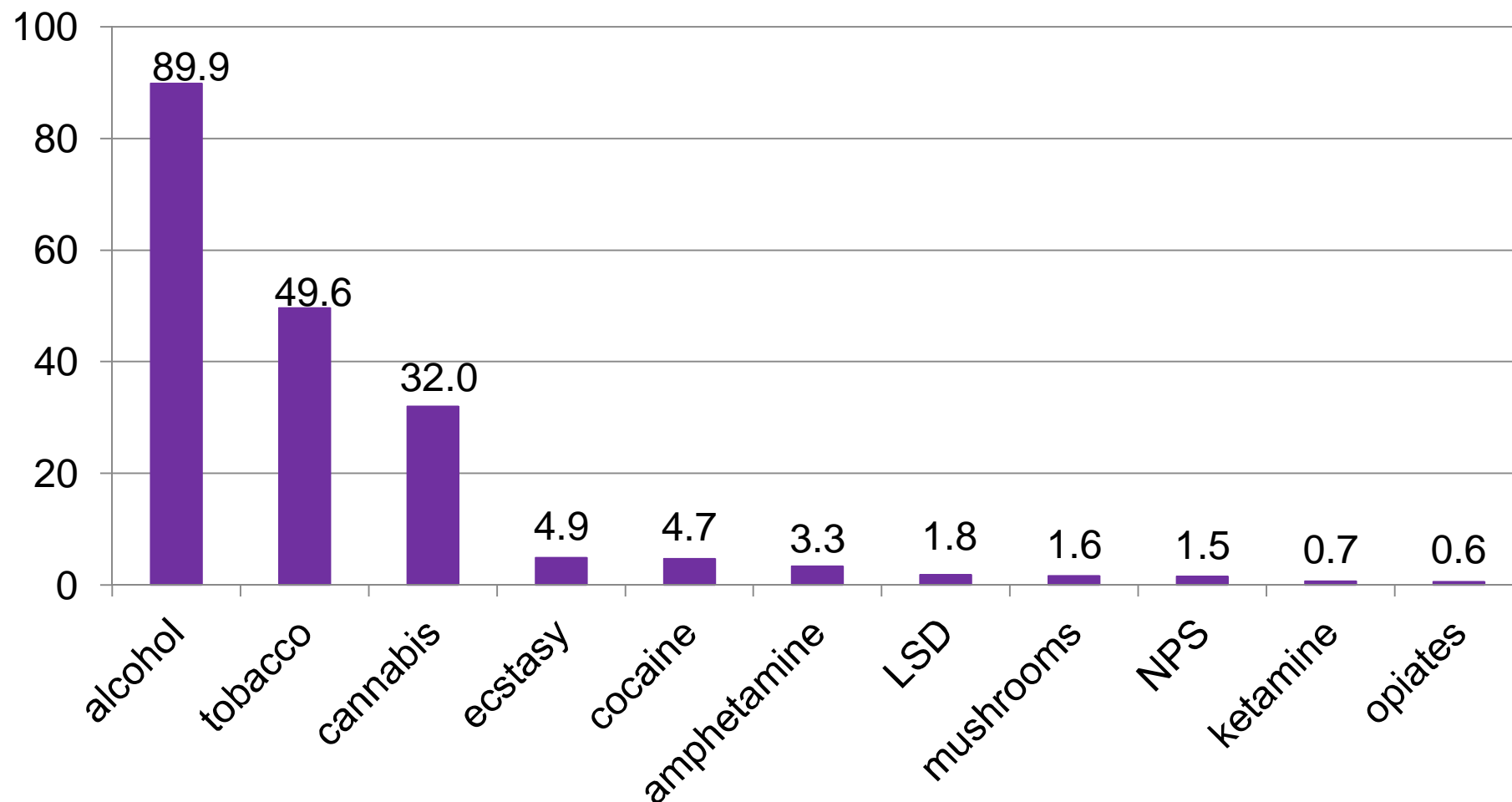
53.8% of women

Age range: 12 to 66

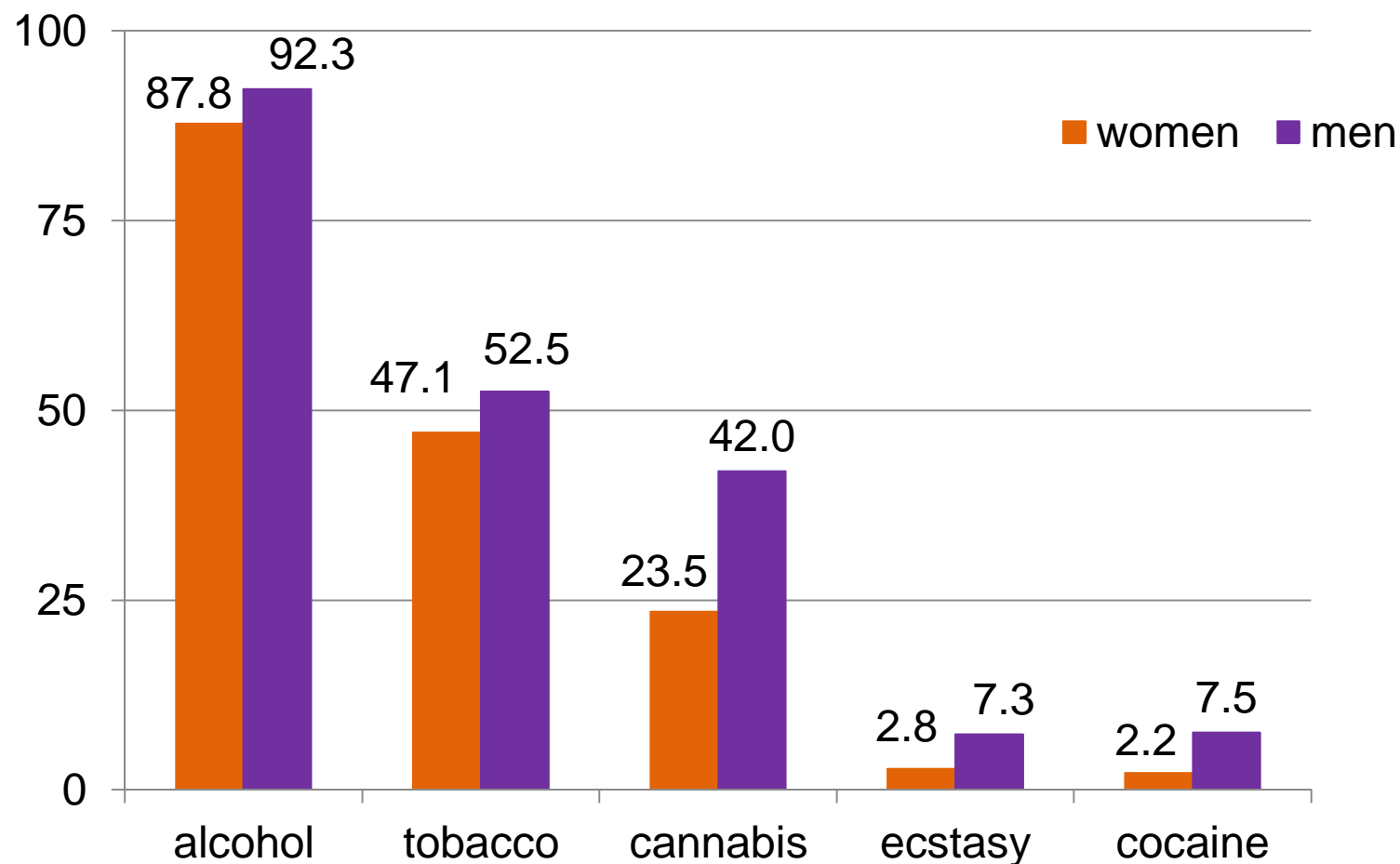
Median age: 21 years



Survey 2014 (last 2 weeks, in %)



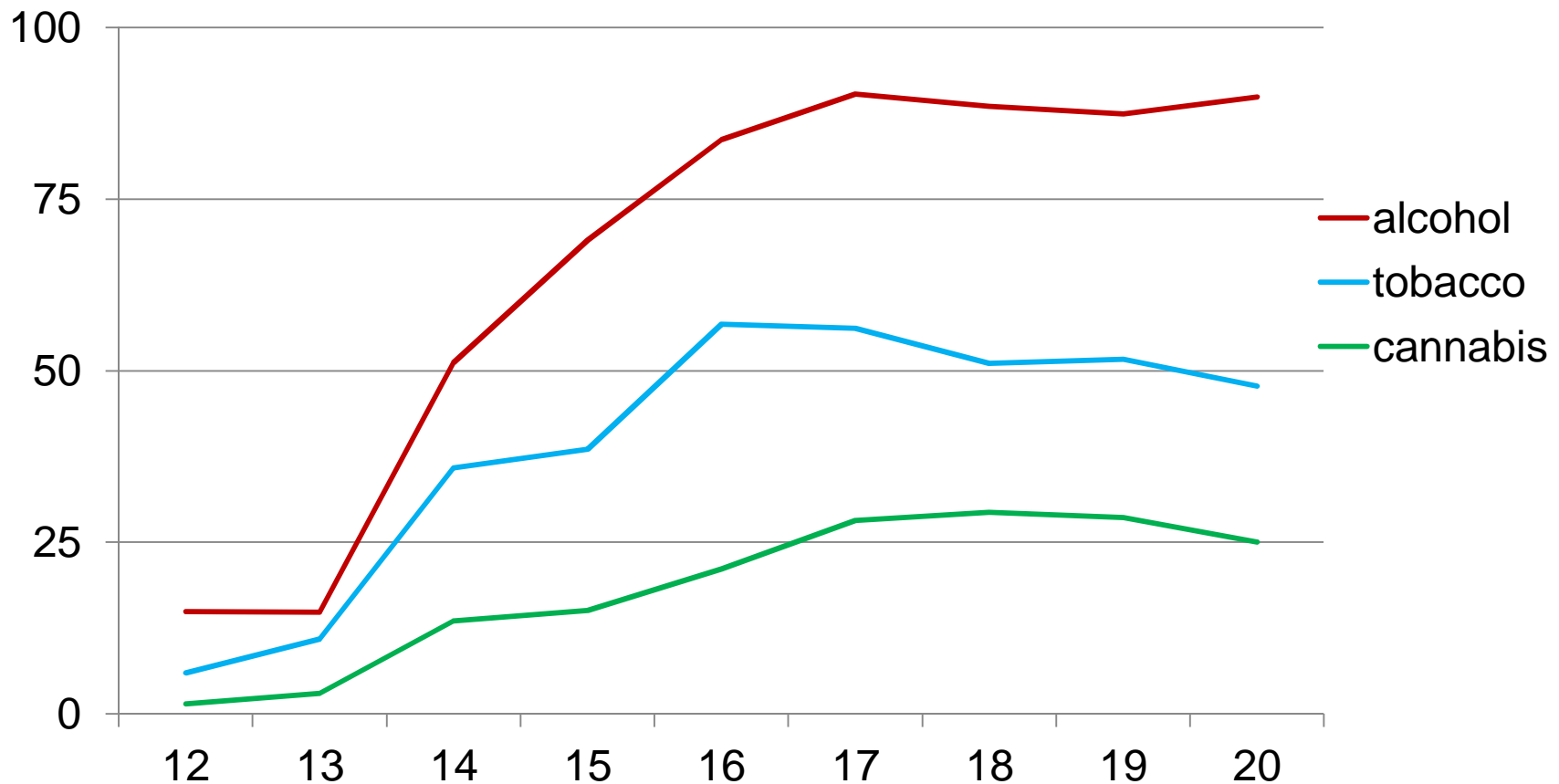
Survey 2014 (last 2 weeks, in %)



Prevalence of the substances

- “ Alcohol, tobacco and cannabis are present everywhere, independent of the setting.
- “ Drug consumers are conservative: they like to stick to the molecules they know, the effects of which they like.
- “ Different stimulants depending on the setting, the country of origin, and the age group: cocaine, ecstasy (MDMA) and amphetamines (speed).

Trends by age (last 2 weeks, in %)



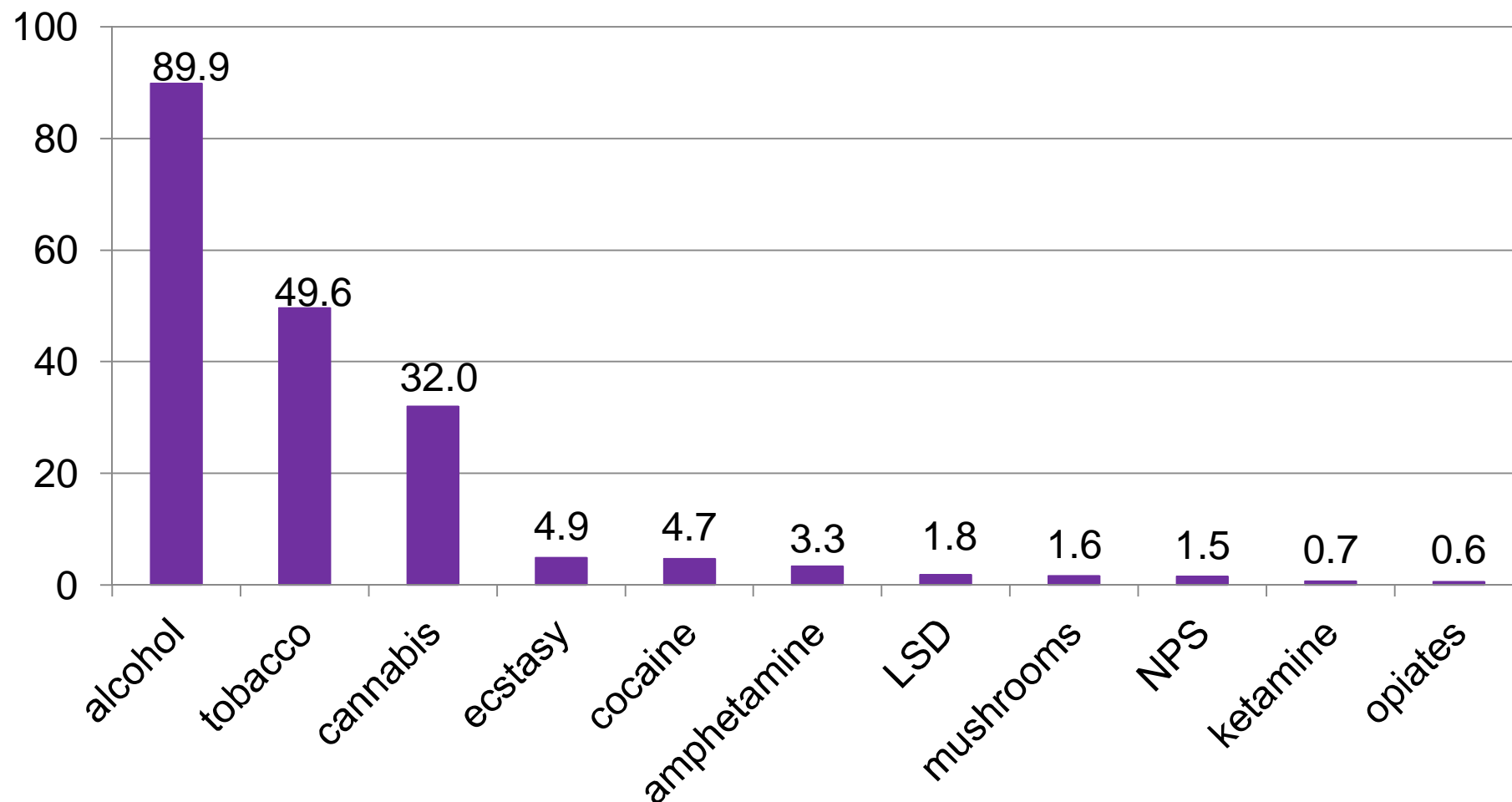
Alcohol

- “ The most common and the most consumed drug in Luxembourg and the Greater Region.
- “ How much alcohol do you drink on a common occasion?
 - on average: 6.1 units
 - range: 0.5 to 52 units
 - median: 4 units
- “ Women drink only slightly less than men, but for the elderly



Source: MAG-Net 2 Project, 2014

Survey 2014 (last 2 weeks, in %)



NPS

- “ NPS are not consumed by a majority of recreational drug users.
- “ In Luxembourg, some users report experimenting with synthetic cannabinoids around 2008 . 2009, but switched back to cannabis whenever possible.
- “ Very small but expert scene of psychonauts who experiment with various psychoactive molecules, seeking stimulant, dissociative or psychedelic effects.

Source: MAG-Net 2 Project, 2014

- “ To assess the prevalence of NPS in Luxembourg, we launched last year a pilot project, named DUCK.

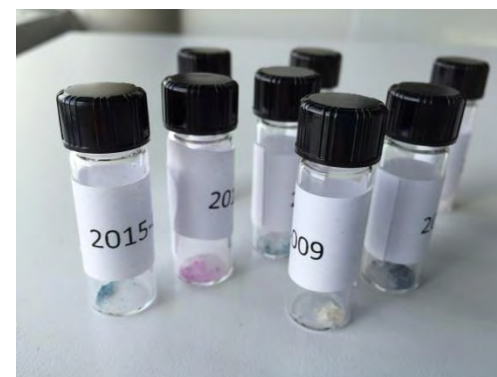
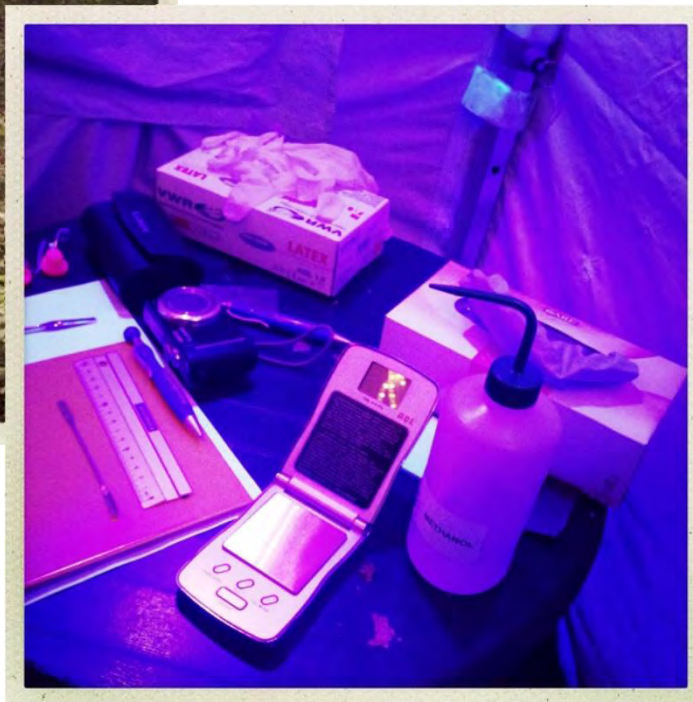
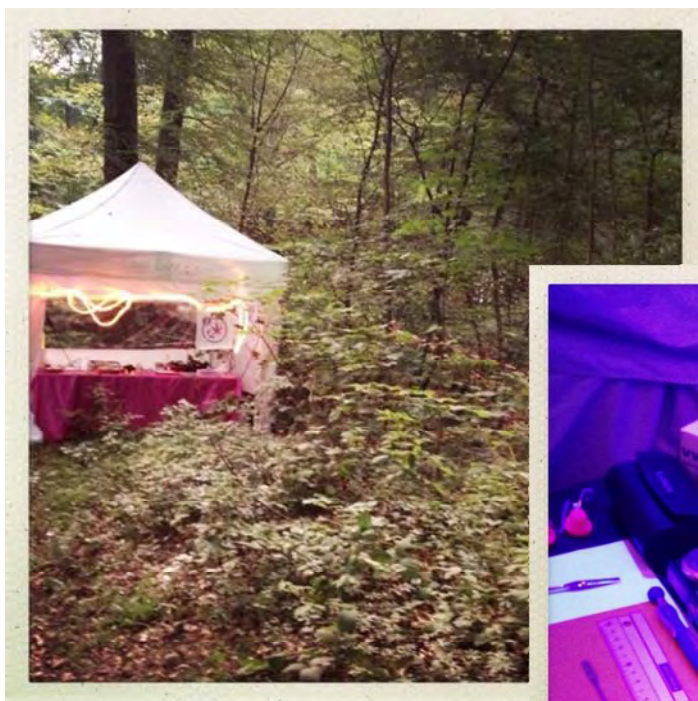
DUCK

Since April 2014, Party MAG-Net offers at selected events a drug checking service for synthetic substances.

DUCK is a joint project from the National Addiction Prevention Center (CePT), the National Health Laboratory (LNS) and the Ministry of Health.



Procedure



GC-MS Analysis

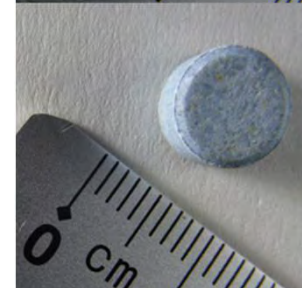
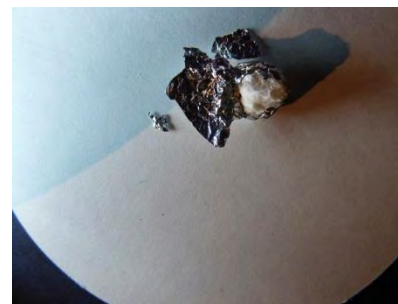
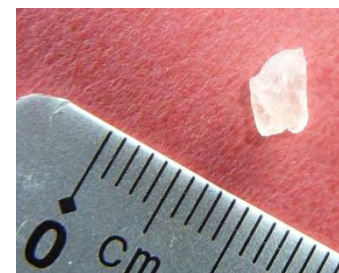
Quack . Health alerts

If a substance or product of increased risk is detected:

- Personal feedback to the consumer and the organiser
- Post on the Party MAG-Net Facebook page
- Transfer of the relevant information to the Ministry of Health and the National Focal Point of the EMCDDA
- Note to the TEDI network and their database

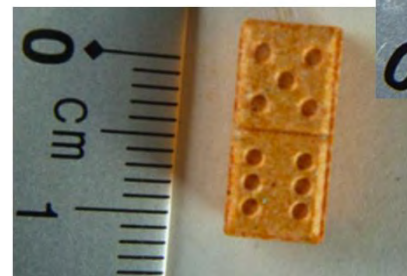


13 months
14 events
92 samples



Purity

- “ Very pure MDMA whether sold in pills, powders or crystals.
- “ Stable quality of cocaine bought in Luxembourg.
- “ Aleatory quality for the amphetamines (speed).
- “ Unexpected results for 22% of the samples.



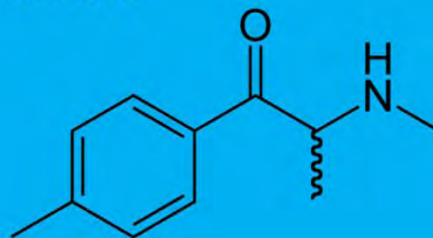
Detected NPS - expected

methylone
entactogen stimulant



25i-NBOME
psychedelic

mephedrone
stimulant

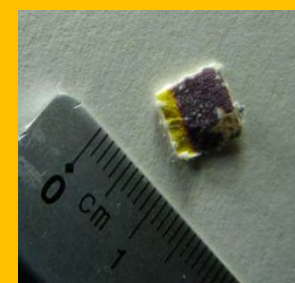


Detected NPS - unexpected

PMMA
entactogen stimulant



DOC
psychedelic



5-MAPB or 6-MAPB
entactogen stimulant



Overall benefits

- “ Availability of hard data on the consumed substances.
- “ Establish contact with recreational drug users, which will not be reached by conventional drug prevention campaigns nor health services for problematic drug users.
- “ Qualitative data about the consumers motives and their positive and negative experiences with the substances.
- “ Enable appropriate governmental and/or public health responses.



Thank you.